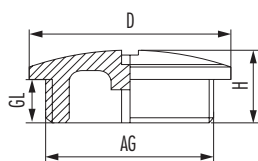


Plug V-N-FS (metric, PG)



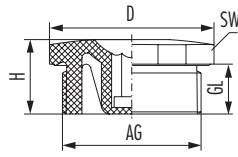
Material	Polyamide
Protection class	IP 54
Temperature range	-40°C to +100°C
Colour	grey / black
RAL	7035 / 9005

RoHS

AG	D mm	GL mm	H mm	Item-No grey	Item-No black
M12 x 1.5	15	6	10	1.251.1200.50	1.251.1201.50
M16 x 1.5	20	7	11	1.251.1600.50	
M16 x 1.5	20	7	11.5		1.251.1601.50
M20 x 1.5	25	6	9.5	1.251.2000.50	1.251.2001.50
M25 x 1.5	30	11	15.5	1.251.2500.50	1.251.2501.50
M32 x 1.5	38	11	16	1.251.3200.50	1.251.3201.50
M40 x 1.5	46	13	18	1.251.4000.50	1.251.4001.50
M50 x 1.5	56	13	18.5	1.251.5000.50	1.251.5001.50
M63 x 1.5	69	15	19	1.251.6300.50	1.251.6301.50
PG 7	15	6	8	1.251.0700.11	1.251.0701.11
PG 9	19	6	9	1.251.0900.11	1.251.0901.11
PG 11	22	6	9	1.251.1100.11	1.251.1101.11
PG 13.5	25	6	9.5	1.251.1300.11	1.251.1301.11
PG 16	27	6	9.5	1.251.1600.11	1.251.1601.11
PG 21	33	8	11	1.251.2100.11	1.251.2101.11
PG 29	44	8	12	1.251.2900.11	1.251.2901.11
PG 36	55	10	15	1.251.3600.11	1.251.3601.11
PG 42	62	10	16	1.251.4200.11	1.251.4201.11
PG 48	69	12	16	1.251.4800.11	1.251.4801.11

Accessories

Plug V-NE (metric, PG)



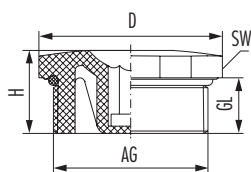
Material	Polyamide, fiber reinforced
Protection class	IP 54
Temperature range	-20°C to +80°C
Colour	black
RAL	9005

RoHS

AG	D mm	GL mm	H mm	D	SW mm	⊙	Item-No
M12 x 1.5	16.5	8.5	13		15	6	1.255.1201.50
M16 x 1.5	20.5	8.5	13		19	8	1.255.1601.50
M20 x 1.5	25.5	9	14.5		24	8	1.255.2001.50
M25 x 1.5	30.5	10.5	16		28	8	1.255.2501.50
M32 x 1.5	38	11.5	17.5		36	8	1.255.3201.50
M40 x 1.5	48	11.5	18		46	8	1.255.4001.50
M50 x 1.5	60	13.5	20		55	8	1.255.5001.50
M63 x 1.5	75	14.5	21		70	8	1.255.6301.50
PG 7	16.5	8.5	13		15	6	1.255.0701.11
PG 9	20.5	8.5	13		19	8	1.255.0901.11
PG 11	25.5	9	14.5		24	8	1.255.1101.11
PG 13.5	25.5	9	14.5		24	8	1.255.1301.11
PG 16	30.5	10.5	16		28	8	1.255.1601.11
PG 21	38	11.5	17.5		36	8	1.255.2101.11
PG 29	48	11.5	18		46	8	1.255.2901.11
PG 36	60	13.5	20		55	8	1.255.3601.11
PG 42	65	13.5	20		60	8	1.255.4201.11
PG 48	75	14.5	21		70	8	1.255.4801.11



Plug V-NE-SD (metric, PG)



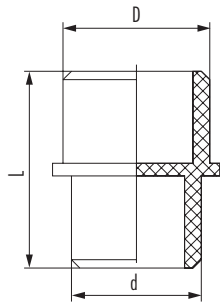
Material	Polyamide, fiber reinforced
Material o-ring	NBR
Protection class	IP 68 – 10 bar / IP 69 K
Temperature range	-20°C to +80°C
Colour	black
RAL	9005

RoHS

AG	D mm	GL mm	H mm	SW mm	⊙	Item-No
M12 x 1.5	16.5	8.5	13	15	6	1.256.1201.50
M16 x 1.5	20.5	8.5	13	19	8	1.256.1601.50
M20 x 1.5	25.5	9	14.5	24	8	1.256.2001.50
M25 x 1.5	30.5	10.5	16	28	8	1.256.2501.50
M32 x 1.5	38	11.5	17.5	36	8	1.256.3201.50
M40 x 1.5	48	11.5	18	46	8	1.256.4001.50
M50 x 1.5	60	13.5	20	55	8	1.256.5001.50
M63 x 1.5	75	14.5	21	70	8	1.256.6301.50
PG 7	16.5	8.5	13	15	6	1.256.0701.11
PG 9	20.5	8.5	13	19	8	1.256.0901.11
PG 11	25.5	9	14.5	24	8	1.256.1101.11
PG 13.5	25.5	9	14.5	24	8	1.256.1301.11
PG 16	30.5	10.5	16	28	8	1.256.1601.11
PG 21	38	11.5	17.5	36	8	1.256.2101.11
PG 29	48	11.5	18	46	8	1.256.2901.11
PG 36	60	13.5	20	55	8	1.256.3601.11
PG 42	65	13.5	20	60	8	1.256.4201.11
PG 48	75	14.5	21	70	8	1.256.4801.11



Plug HSK-V



Material	Polyamide
Temperature range	-40°C to +100°C
Colour	black
RAL	9005

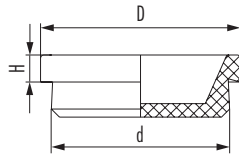
RoHS

// Dome plugs for cable glands

Suitable for AG	Suitable for AG 2	Suitable for AG 3	d mm	D mm	L mm	Item-No
PG 7	M12 x 1.5		4.5	6	15	1.280.0007.00
PG 9	M16 x 1.5	NPT 3/8"	5.5	7.5	17	1.280.0009.00
PG 11	M16 x 1.5 / 11		6.5	8.5	19	1.280.0011.00
PG 13.5	M20 x 1.5	NPT 1/2"	8.5	11.5	19	1.280.0013.00
PG 16	M20 x 1.5 / 16	NPT 1/2" / 16	11.5	13.5	19.5	1.280.0016.00
PG 21	M25 x 1.5	NPT 3/4"	15.5	17.5	23.5	1.280.0021.00
PG 29	M32 x 1.5	NPT 1" / NPT 1 1/4"	19	24	26	1.280.0029.00
PG 36	M40 x 1.5	NPT 1 1/2"	25	31	28	1.280.0036.00
PG 42	M50 x 1.5		30	37	28	1.280.0042.00
PG 48	M63 x 1.5		34	43	28	1.280.0048.00



Unthreaded sealing plug DS



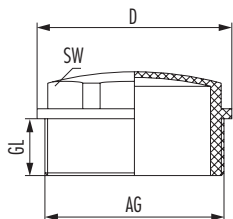
Material	Elastomer
Protection class	IP 54
Temperature range	-20°C to +80°C
Colour	black
RAL	9005

RoHS

// For through holes or tapped holes

d mm	D mm	H mm	Item-No
12	17	5	1.250.1201.50
16	20	5	1.250.1601.50
20	25	5	1.250.2001.50
25	30	5	1.250.2501.50
32	37	5	1.250.3201.50
40	45	5	1.250.4001.50
50	56	5	1.250.5001.50
63	70	5	1.250.6301.50

Threaded sealing plug WN (metric)

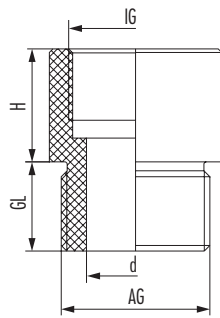


Material	Polyethylene
Protection class	IP 54
Temperature range	-20°C to +80°C
Colour	grey
RAL	7035

RoHS

AG	D mm	GL mm	SW mm	Item-No
M16 x 1.5	19.8	9	15	1.282.1600.50
M20 x 1.5	24	12	19	1.282.2000.50
M25 x 1.5	29.5	12	24	1.282.2500.50
M32 x 1.5	37.5	14	30	1.282.3200.50
M40 x 1.5	45.8	14	37	1.282.4000.50
M50 x 1.5	55.8	18	46	1.282.5000.50
M63 x 1.5	68.8	20	56	1.282.6300.50

Adapter R-M-PA type C (metric, PG)



Material	Polypropylene
Temperature range	-20°C to +80°C
Colour	black
RAL	9005

RoHS

// For further sizes see type A or B

AG	IG	Type	d mm	GL mm	H mm	Item-No
M40 x 1.5	M32 x 1.5	C	30	15	5	1.273.4032.50
M50 x 1.5	M40 x 1.5	C	38	15	5	1.273.5040.50
M63 x 1.5	PG 42	C	52	15	5	1.273.6342.50
M63 x 1.5	M50 x 1.5	C	48	15	5	1.273.6350.50
PG 9	M12 x 1.5	C	8.5	15	19	1.273.0912.11
PG 11	M16 x 1.5	C	11.5	15	19	1.273.1116.11
PG 21	M25 x 1.5	C	20.5	15	19	1.273.2125.11
PG 29	M32 x 1.5	C	28	15	19	1.273.2932.11
PG 36	M40 x 1.5	C	38	15	5	1.273.3640.11
PG 42	M40 x 1.5	C	38	15	5	1.273.4240.11
PG 48	M50 x 1.5	C	38	15	5	1.273.4850.11