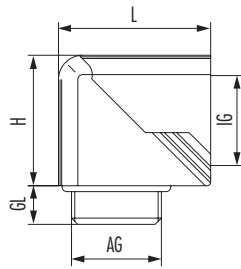


Accessories

90° Snap Elbow (metric, PG, NPT)

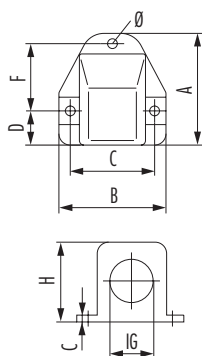


Material	Polyamide
Material o-ring	NBR
Protection class	IP 68
Temperature range	-20°C to +80°C
Colour	grey / black
RAL	7035 / 9005

RoHS

AG	IG	GL mm	H mm	L mm	Item-No grey	Item-No black
M16 x 1.5	PG 9	8	23	28.5	1.315.1600.50	1.315.1601.50
M16 x 1.5	M16 x 1.5	8	23	28.5	1.316.1600.50	1.316.1601.50
M20 x 1.5	PG 13.5	9	30.5	35	1.315.2000.50	1.315.2001.50
M20 x 1.5	M20 x 1.5	9	30.5	35	1.316.2000.50	1.316.2001.50
M25 x 1.5	PG 21	11	40	49	1.315.2500.50	1.315.2501.50
M25 x 1.5	M25 x 1.5	11	40	49	1.316.2500.50	1.316.2501.50
M32 x 1.5	PG 29	11	51.5	60	1.315.3200.50	1.315.3201.50
PG 9	PG 9	8	23	28.5	1.315.0900.11	1.315.0901.11
PG 9	M16 x 1.5	8	23	28.5	1.316.0900.11	1.316.0901.11
PG 11	PG 11	8	27	31.5	1.315.1100.11	1.315.1101.11
PG 13.5	PG 13.5	9	30.5	35	1.315.1300.11	1.315.1301.11
PG 13.5	M20 x 1.5	9	30.5	35	1.316.1300.11	1.316.1301.11
PG 16	PG 16	10	32.5	37.5	1.315.1600.11	1.315.1601.11
PG 21	PG 21	11	40	49	1.315.2100.11	1.315.2101.11
PG 21	M25 x 1.5	11	40	49	1.316.2100.11	1.316.2101.11
PG 29	PG 29	11	51.5	60	1.315.2900.11	1.315.2901.11
NPT 3/8"	PG 9	15	23	28.5	1.315.3800.70	1.315.3801.70
NPT 1/2"	PG 13.5	13	30.5	35	1.315.1200.70	1.315.1201.70
NPT 3/4"	PG 21	13	40	49	1.315.3400.70	1.315.3401.70
NPT 1"	PG 29	19	51.5	60	1.315.1000.70	1.315.1001.70

Foldable flange elbow KF-G type A (metric, PG)



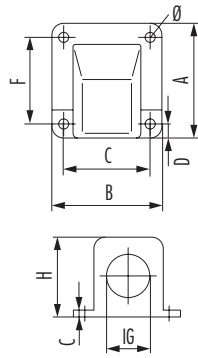
Material	Polyamide
Seal	NBR
Protection class	IP 65
Temperature range	-40°C to +110°C
Colour	grey / black
RAL	7011 / 9005

RoHS

// For further sizes see type B

IG	Type	Ø mm	A mm	B mm	C mm	D mm	F mm	H mm	Item-No grey	Item-No black
M16 x 1.5	A	4.3	49	47	37	15.5	29.5	29.5	1.312.1600.50	1.312.1601.50
M20 x 1.5	A	4.5	49	47	37	15.5	29.5	35	1.312.2000.50	1.312.2001.50
M25 x 1.5	A	6	69	65	51.5	21.5	42	44	1.312.2500.50	1.312.2501.50
PG 11	A	4.3	49	47	37	15.5	29.5	35	1.312.1100.11	1.312.1101.11
PG 16	A	4.3	49	47	37	15.5	29.5	35	1.312.1600.11	1.312.1601.11
PG 21	A	6	69	65	51.5	21.5	42	44	1.312.2100.11	1.312.2101.11

Foldable flange elbow KF-G type B (metric, PG)



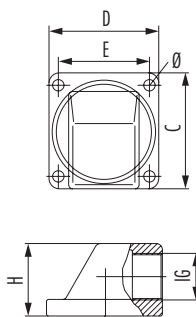
Material	Polyamide
Seal	NBR
Protection class	IP 65
Temperature range	-40°C to +110°C
Colour	black / grey
RAL	9005 / 7011

RoHS

// For further sizes see type A

IG	Type	Ø mm	A mm	B mm	C mm	D mm	F mm	H mm	Item-No grey	Item-No black
M32 x 1.5	B	6.5	90	78	64.5	9.5	64.5	55	1.312.3200.50	1.312.3201.50
M40 x 1.5	B	6.5	99	94	79.5	10.5	79.5	66	1.312.4000.50	1.312.4001.50
M50 x 1.5	B	6.5	116	101	87.5	12.5	87.5	76	1.312.5000.50	1.312.5001.50
PG 29	B	6.5	90	78	64.5	9.5	64.5	55	1.312.2900.11	1.312.2901.11
PG 36	B	6.5	99	94	79.5	10.5	79.5	66	1.312.3600.11	1.312.3601.11
PG 48	B	6.5	116	101	87.5	12.5	87.5	76	1.312.4800.11	1.312.4801.11

Flange elbow FW-T (PG)



Material	Polycarbonate
Material o-ring	NBR
Protection class	IP 65
Temperature range	-20°C to +80°C
Colour	grey
RAL	7035

RoHS

// Metric threads available on request

IG	Ø mm	C mm	D mm	E mm	H mm	Item-No
PG 9	4.3	50	45	37	29	1.306.0900.14
PG 11	4.3	50	45	37	29	1.306.1100.14
PG 13.5	5.5	56	53	44	35	1.306.1300.14
PG 16	5.5	56	53	44	35	1.306.1600.14
PG 21	5.5	68	68	55.5	43	1.306.2100.14
PG 29	5.5	74	70	60	52	1.306.2900.14
PG 36	6.5	93	88	72	68	1.306.3600.14