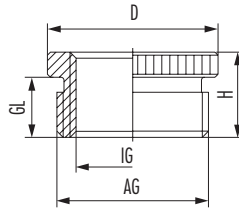


Adapter R-H (metric, PG)

Material

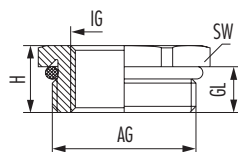
Nickel-plated brass

RoHS



AG	IG	D mm	GL mm	H mm	Item-No
M16 x 1.5	M12 x 1.5	18	6	8.5	1.076.1612.50
M20 x 1.5	M12 x 1.5	24	6.5	9	1.076.2012.50
M20 x 1.5	M16 x 1.5	24	6.5	9	1.076.2016.50
M25 x 1.5	M16 x 1.5	30	7	10	1.076.2516.50
M25 x 1.5	M20 x 1.5	30	7	10	1.076.2520.50
M32 x 1.5	M20 x 1.5	39	8	11.5	1.076.3220.50
M32 x 1.5	M25 x 1.5	39	8	11.5	1.076.3225.50
M40 x 1.5	M25 x 1.5	43	8	11.5	1.076.4025.50
M40 x 1.5	M32 x 1.5	43	9	12.5	1.076.4032.50
M50 x 1.5	M32 x 1.5	57	10	14	1.076.5032.50
M50 x 1.5	M40 x 1.5	57	10	14	1.076.5040.50
M63 x 1.5	M40 x 1.5	64	10	14	1.076.6340.50
M63 x 1.5	M50 x 1.5	64	10	14	1.076.6350.50
PG 9	PG 7	17	6	8.5	1.071.0907.01
PG 11	PG 7	20	6	8.5	1.071.1107.01
PG 11	PG 9	20	6	8.5	1.071.1109.01
PG 13.5	PG 9	22	6.5	9	1.071.1309.01
PG 13.5	PG 11	22	6.5	9	1.071.1311.01
PG 16	PG 9	24	6.5	9.5	1.071.1609.01
PG 16	PG 11	24	6.5	9.5	1.071.1611.01
PG 16	PG 13.5	24	6.5	9.5	1.071.1613.01
PG 21	PG 11	30	7	10	1.071.2111.01
PG 21	PG 13.5	30	7	10	1.071.2113.01
PG 21	PG 16	30	7	10	1.071.2116.01
PG 29	PG 16	39	8	11.5	1.071.2916.01
PG 29	PG 21	39	8	11.5	1.071.2921.01
PG 36	PG 21	50	9	12.5	1.071.3621.01
PG 36	PG 29	50	9	12.5	1.071.3629.01
PG 42	PG 29	57	10	14	1.071.4229.01
PG 42	PG 36	57	10	14	1.071.4236.01
PG 48	PG 36	64	10	14	1.071.4836.01
PG 48	PG 42	64	10	14	1.071.4842.01

Adapter RSD-Ms (metric, PG)



Material	Nickel-plated brass
Material o-ring	NBR
Temperature range	-40°C to +100°C

RoHS

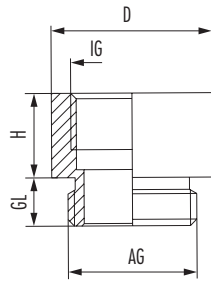
// O-ring made of FKM / VMQ on request

AG	IG	GL mm	H mm	SW mm	Item-No
M16 x 1.5	M12 x 1.5	5	8	17	1.077.1612.50
M20 x 1.5	M12 x 1.5	6	9	22	1.077.2012.50
M20 x 1.5	M16 x 1.5	6	9	22	1.077.2016.50
M25 x 1.5	M16 x 1.5	7	10	27	1.077.2516.50
M25 x 1.5	M20 x 1.5	7	10	27	1.077.2520.50
M32 x 1.5	M16 x 1.5	8	11	34	1.077.3216.50
M32 x 1.5	M20 x 1.5	8	11	35	1.077.3220.50
M32 x 1.5	M25 x 1.5	8	11	34	1.077.3225.50
M40 x 1.5	M20 x 1.5	8	12	43	1.077.4020.50
M40 x 1.5	M25 x 1.5	8	12	43	1.077.4025.50
M40 x 1.5	M32 x 1.5	8	12	43	1.077.4032.50
M50 x 1.5	M25 x 1.5	9	13	55	1.077.5025.50
M50 x 1.5	M32 x 1.5	9	13	55	1.077.5032.50
M50 x 1.5	M40 x 1.5	9	13	55	1.077.5040.50
M63 x 1.5	M32 x 1.5	10	14	65	1.077.6332.50
M63 x 1.5	M40 x 1.5	10	14	65	1.077.6340.50
M63 x 1.5	M50 x 1.5	10	14	65	1.077.6350.50
PG 9	PG 7	6	8.8	17	1.077.0907.01
PG 11	PG 7	6	9	20	1.077.1107.01
PG 11	PG 9	6	9	20	1.077.1109.01
PG 13.5	PG 9	6.5	9.5	22	1.077.1309.01
PG 13.5	PG 11	6.5	9.5	22	1.077.1311.01
PG 16	PG 9	6.5	9.5	24	1.077.1609.01
PG 16	PG 11	6.5	9.5	24	1.077.1611.01
PG 16	PG 13.5	6.5	9.5	24	1.077.1613.01
PG 21	PG 11	7	10.3	30	1.077.2111.01
PG 21	PG 13.5	7	10.3	30	1.077.2113.01
PG 21	PG 16	7	10.3	30	1.077.2116.01
PG 29	PG 16	8	11.5	40	1.077.2916.01
PG 29	PG 21	8	11.5	40	1.077.2921.01
PG 36	PG 21	9	12.5	50	1.077.3621.01
PG 36	PG 29	9	12.5	50	1.077.3629.01
PG 42	PG 29	10	13.5	57	1.077.4229.01
PG 42	PG 36	10	13.5	57	1.077.4236.01
PG 48	PG 36	10	13.5	64	1.077.4836.01
PG 48	PG 42	10	13.5	64	1.077.4842.01



Accessories

Adapter RE-Ms (metric, PG)



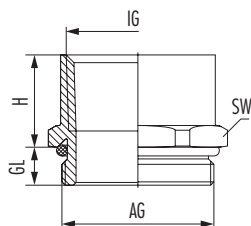
Material

Nickel-plated brass

RoHS

AG	IG	D mm	GL mm	H mm	Item-No
M16 x 1.5	PG 9	20	6	10.5	1.039.1609.01
M20 x 1.5	PG 11	22	6.5	12.5	1.039.2011.01
M20 x 1.5	PG 13.5	22	6.5	12.5	1.039.2013.01
M20 x 1.5	PG 16	24	6.5	12.5	1.039.2016.01
M25 x 1.5	PG 16	28	6.5	12.5	1.039.2516.01
M25 x 1.5	PG 21	30	6.5	14.5	1.039.2521.01
M32 x 1.5	PG 29	39	7	16	1.039.3229.01
PG 9	M16 x 1.5	20	6	10.5	1.039.0916.01
PG 11	M20 x 1.5	22	6.5	12.5	1.039.1120.01
PG 13.5	M20 x 1.5	22	6.5	12.5	1.039.1320.01
PG 16	M25 x 1.5	27	6.5	14.5	1.039.1625.01

Adapter RE-Ms (metric, PG, NPT)



Material	Nickel-plated brass
Material o-ring	NBR
Temperature range	-40°C to +100°C

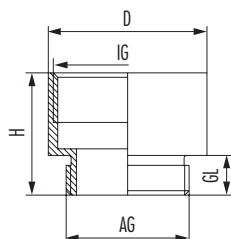
RoHS

AG	IG	GL mm	H mm	SW mm	Item-No
M16 x 1.5	NPT 1/2"	6	17	24	1.171.1612.50
M20 x 1.5	NPT 1/2"	6	17	24	1.171.2012.50
M25 x 1.5	NPT 1/2"	7	8	30	1.171.2512.50
M25 x 1.5	NPT 3/4"	7	19	30	1.171.2534.50
M32 x 1.5	NPT 1"	8	25	40	1.171.3210.50
M32 x 1.5	NPT 1 1/4"	8	25	46	1.171.3254.50
PG 11	NPT 1/2"	6	16.7	24	1.171.1112.01
PG 13.5	NPT 1/2"	6.5	17	24	1.171.1312.01
PG 16	NPT 1/2"	6.5	16.5	24	1.171.1612.01
PG 21	NPT 1/2"	7	8	30	1.171.2112.01
PG 21	NPT 3/4"	7	17	30	1.171.2134.01
PG 29	NPT 1"	8	12	40	1.171.2910.01

Material

Nickel-plated brass

RoHS



AG	IG	D mm	GL mm	H mm	Item-No
M12 x 1.5	M16 x 1.5	18	5	15	1.033.1216.50
M16 x 1.5	M20 x 1.5	22	6	17.5	1.033.1620.50
M20 x 1.5	M25 x 1.5	27	6.5	19	1.033.2025.50
M25 x 1.5	M32 x 1.5	34	6.5	21	1.033.2532.50
M32 x 1.5	M40 x 1.5	42	7	23	1.033.3240.50
M40 x 1.5	M50 x 1.5	53	9	31	1.033.4050.50
M50 x 1.5	M63 x 1.5	66	9	31	1.033.5063.50
PG 7	PG 9	17	5	15	1.033.0709.01
PG 9	PG 11	20	6	16.5	1.033.0911.01
PG 9	PG 13.5	22	6	17.5	1.033.0913.01
PG 11	PG 13.5	22	6	17.5	1.033.1113.01
PG 11	PG 16	24	6	18.5	1.033.1116.01
PG 11	PG 21	30	6	20.5	1.033.1121.01
PG 13.5	PG 16	24	6.5	19	1.033.1316.01
PG 13.5	PG 21	30	6.5	21	1.033.1321.01
PG 16	PG 21	30	6.5	21	1.033.1621.01
PG 16	PG 29	39	6.5	22.5	1.033.1629.01
PG 21	PG 29	39	7	23	1.033.2129.01
PG 29	PG 36	50	8	27.5	1.033.2936.01
PG 36	PG 42	57	9	31	1.033.3642.01
PG 42	PG 48	64	10	33	1.033.4248.01