

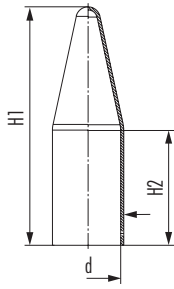
Material	Plastic, glass fiber reinforced
Temperature range	-60°C to +105°C

RoHS

Suitable for AG	D mm	d mm	s mm	Item-No
M16 x 1.5	24	16.1	1.5	1.326.1600.50
M20 x 1.5	28.5	20.5	1.5	1.326.2000.50
M25 x 1.5	36.5	25.5	1.6	1.326.2500.50
M32 x 1.5	42.5	32.5	1.6	1.326.3200.50
M40 x 1.5	51.5	40	1.5	1.326.4000.50
M50 x 1.5	61.5	51	1.6	1.326.5000.50
M63 x 1.5	76	63.5	1.6	1.326.6300.50
M75 x 1.5	87.5	75.5	1.8	1.326.7500.50
NPT 3/8"	25.5	17.5	1.5	1.326.3800.70
NPT 1/2"	30	22	1.5	1.326.1200.70
NPT 3/4"	33.5	26.5	1.5	1.326.3400.70
NPT 1"	42.5	34	1.6	1.326.1000.70
NPT 1 1/4"	52	42.5	1.6	1.326.5400.70
NPT 1 1/2"	58.7	50	1.5	1.326.6400.70
NPT 2"	69.5	60.8	1.6	1.326.2000.70
NPT 2 1/2"	83	73.8	1.5	1.326.5200.70
NPT 3"	115.5	91.5	1.8	1.326.3000.70

# EXIOS cable glands for "Hazardous Areas"

## PVC shroud



Material

PVC

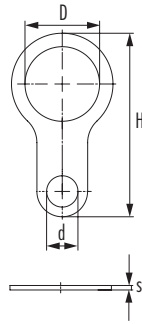
RoHS

Suitable for size	d mm	H1 mm	H2 mm	Item-No
20-1	26	115	60	1.802.2000.50
20-2	28	125	70	1.802.2000.51
20-3	34	130	65	1.802.2000.52
25	42	160	90	1.802.2500.50
32	51	165	95	1.802.3200.50
40	63	200	110	1.802.4000.50
50	72	210	115	1.802.5000.50
63	88	245	140	1.802.6300.50
75	108	245	140	1.802.7500.50

Material

Brass

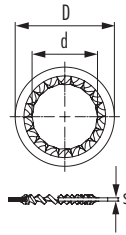
RoHS



Suitable for AG	D mm	d mm	s mm	H mm	Item-No
M16 x 1.5	16.2	6.7	1.5	49	1.022.1600.50
M20 x 1.5	21	7	1.5	54	1.022.2000.50
M25 x 1.5	25.5	10.5	1.5	61.5	1.022.2500.50
M32 x 1.5	32.5	12.2	1.5	73	1.022.3200.50
M40 x 1.5	40.5	13.5	1.5	86.5	1.022.4000.50
M50 x 1.5	51	13.5	1.5	112	1.022.5000.50
M63 x 1.5	64	13.5	1.5	126	1.022.6300.50
M75 x 1.5	76.2	13.5	1.5	138	1.022.7500.50
NPT 3/8"	17.5	7	1.5	53.8	1.022.3800.70
NPT 1/2"	21.5	7	1.5	53.5	1.022.1200.70
NPT 3/4"	26.7	10.5	1.5	61.5	1.022.3400.70
NPT 1"	34.5	12.2	1.5	73	1.022.1000.70
NPT 1 1/4"	43.5	13.5	1.5	86.5	1.022.5400.70
NPT 1 1/2"	51	13.5	1.5	112	1.022.6400.70
NPT 2"	61.2	13.5	1.5	126	1.022.2000.70
NPT 2 1/2"	76.2	13.5	1.5	138	1.022.5200.70

# EXIOS cable glands for "Hazardous Areas"

## Serrated washer



Material

Stainless steel

RoHS

Suitable for AG	D mm	d mm	s mm	Item-No
M16 x 1.5	26.5	17	1.5	1.329.1600.50
M20 x 1.5	33.5	21.5	1.5	1.329.2000.50
M25 x 1.5	39	26	1.5	1.329.2500.50
M32 x 1.5	48	30.5	1.5	1.329.3200.50
M40 x 1.5	59.5	40.5	1.5	1.329.4000.50
M50 x 1.5	71	51.5	1.5	1.329.5000.50
M63 x 1.5	87	64	1.5	1.329.6300.50
M75 x 1.5	102.5	76.5	1.5	1.329.7500.50
NPT 3/8"	30	19.5	1.5	1.329.3800.70
NPT 1/2"	39	23.5	1.5	1.329.1200.70
NPT 3/4"	42	29.5	1.5	1.329.3400.70
NPT 1"	49.5	35	1.5	1.329.1000.70
NPT 1 1/4"	59.5	44	1.5	1.329.5400.70
NPT 1 1/2"	71	51.5	1.5	1.329.6400.70
NPT 2"	86.6	61.5	1.5	1.329.2000.70
NPT 2 1/2"	102.5	76.5	1.5	1.329.5200.70